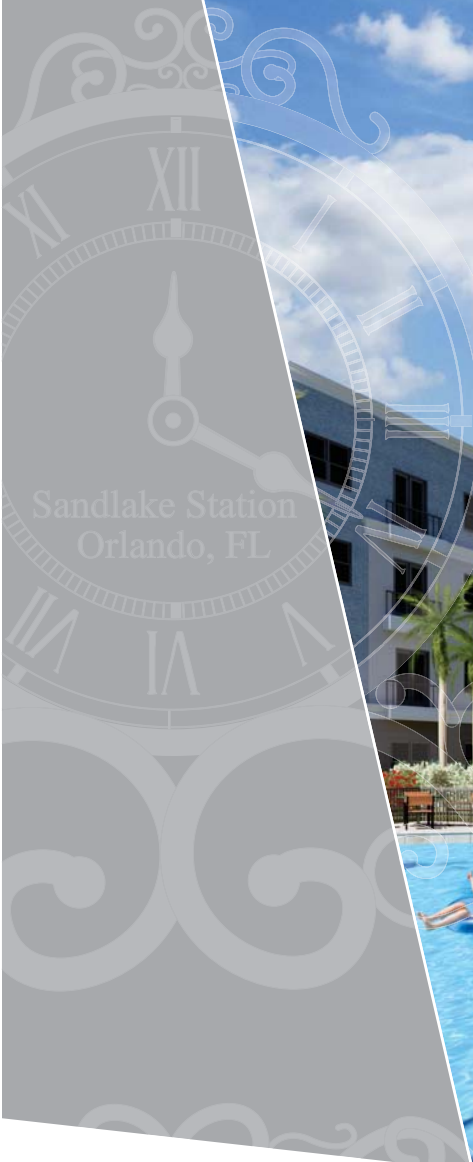




Sandlake Station

Condominiums & Shops



Sandlake Station
Orlando, FL



***"A NEW LIFESTYLE
THAT DEFIES THE SENSES"***

www.sandlakestationorlando.com



RESIDENTIAL BUILDINGS AND TOWNHOMES

Sandlake Station Condominium and Shops is a new ground up development made up of 3 residential buildings totaling 196 apartments and 41 Townhomes. Apartments are offered in 1 Bedroom + Den, 2 Bedroom + Den, and 3 Bedroom configurations while Townhomes are offered as 3 Bedroom + Garage units.

Sandlake Station Condominium and Shops is a unique community located within walking distance of Sandlake Road Station

BUILDINGS AND COMMON AREAS

Functional designs with open spaces and direct sunlight

- Security with electronically controlled access and cameras
- Large Pool and Fitness Center equipped with studio classes, multi-strength and cardio equipment
- CLUB HOUSE with exclusive terrace, ideal for any type of occasion.





Sandlake Station
Orlando, FL

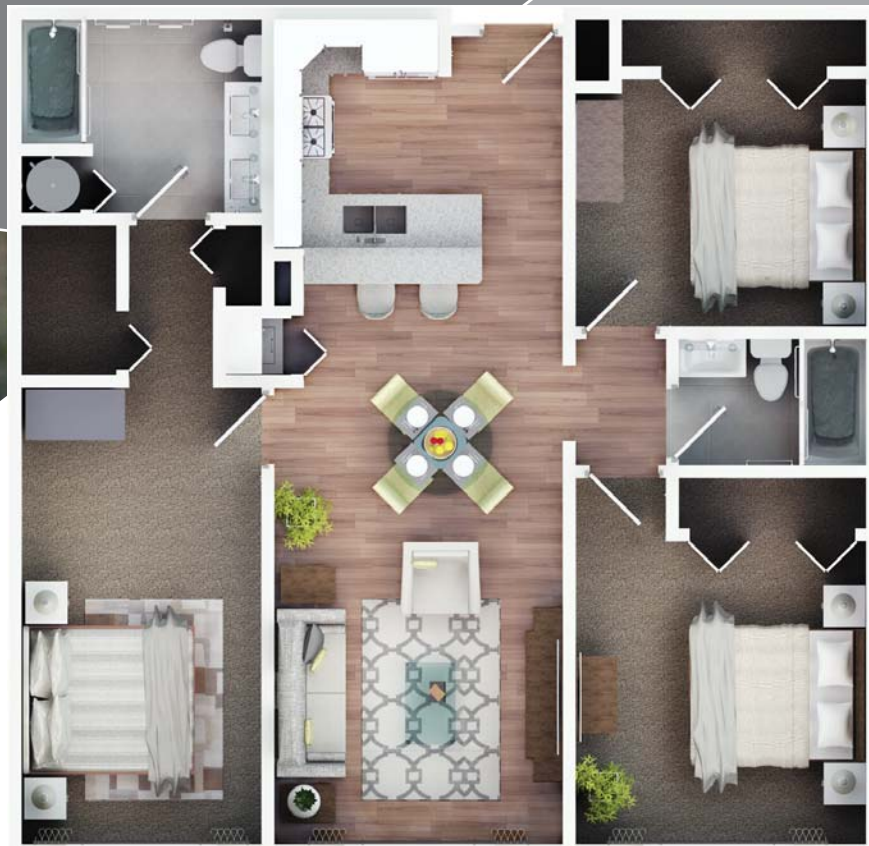


RESIDENCES FEATURES

- Open kitchens with state-of-the-art modern cabinets and natural granite countertop, fully equipped with high-efficiency stainless steel appliances
- Bathrooms decorated with exclusive cabinets and finishes with mirrors and designer accessories
- Spacious walk-in closets in the bedrooms
- Wooden floors in social areas and carpets in bedrooms



FLOOR PLANS

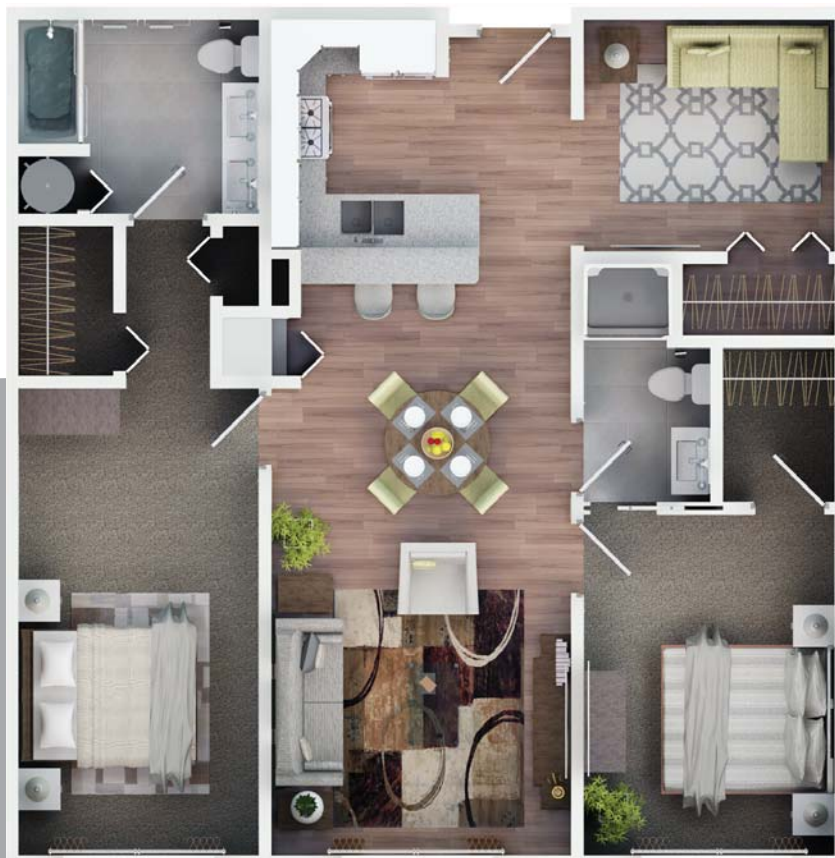


APARTMENT TYPE A

1143 sf (106.2 m²)

3 BEDROOMS

2 BATHS



APARTMENT TYPE B

1089 sf (101.2 m²)

2 BEDROOMS

2 BATHS

1 DEN

Sandlake
Orlando



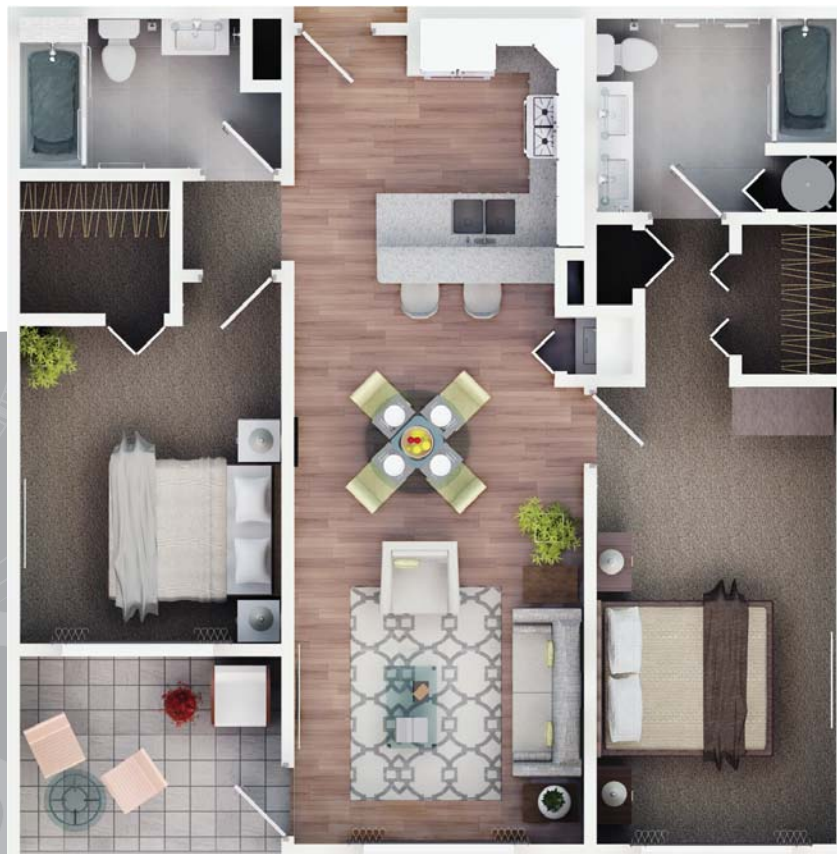
APARTMENT TYPE D

754 sf (70 m²)

1 BEDROOM

1 BATH

1 DEN



APARTMENT TYPE C

1015 sf (94.3 m²)

2 BEDROOMS

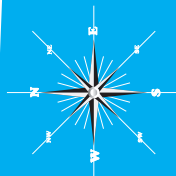
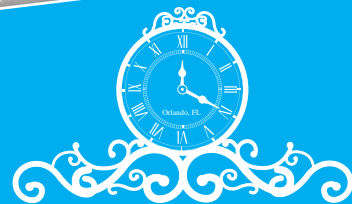
2 BATHS

1 TERRACE





SITEPLAN





TOWNHOMES



DESIGN
QUALITY
COMFORT





FLOOR PLANS

1500 sf (139.35 m2)
3 BEDROOMS
2.5 BATHS
1 GARAGE
1 TERRACE



FIRST FLOOR



SECOND FLOOR



PRIME LOCATION CLOSE TO ALL ...

SUNRAIL STATION

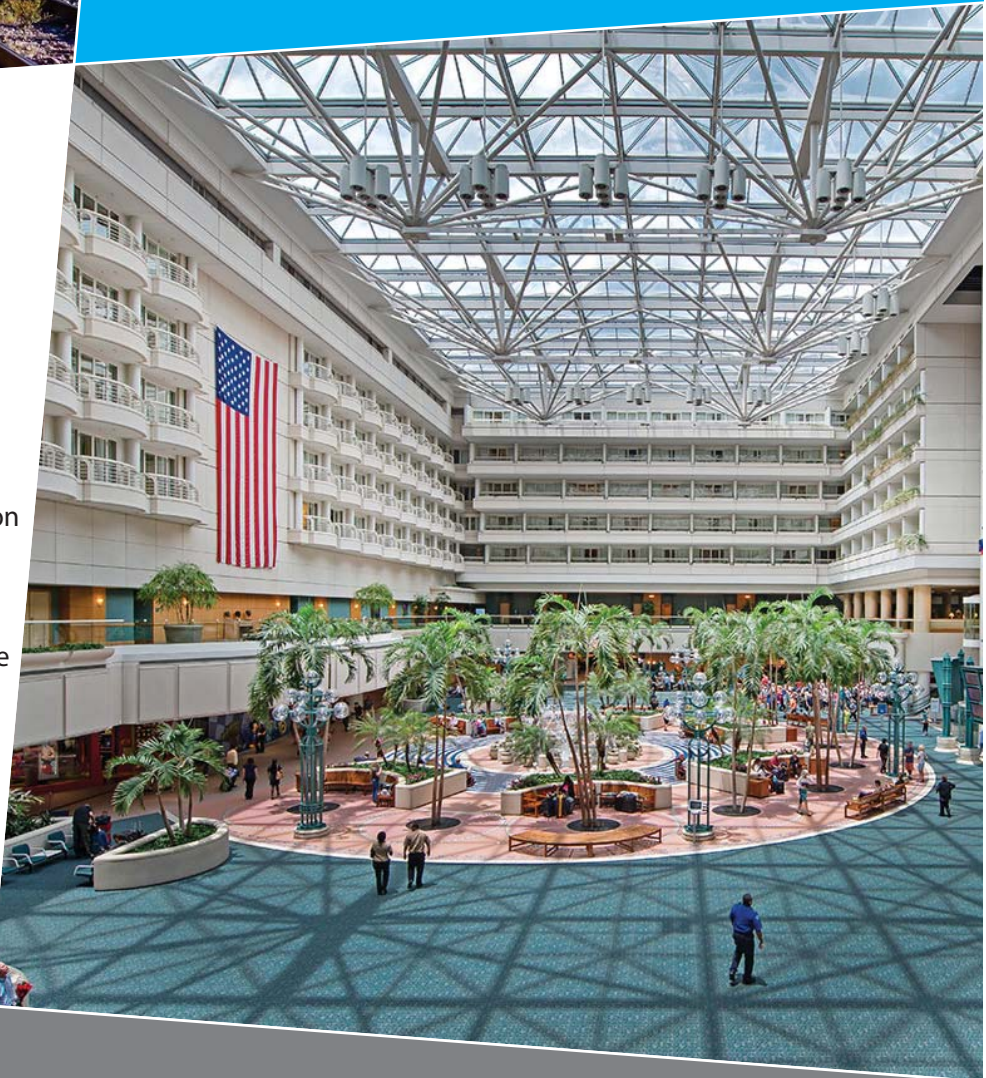
SunRail Station is part of a train system currently connecting 12 stations in Center Florida and it is adding 4 more starting 2018. Located in the intersection of Orange Avenue and Sandlake Road, it serves a growing residential and business district in South Orlando. The station offers a 7 Minute commute to Downtown Orlando as well as bus connections to points of interest such as Orlando International Airport.

ORLANDO INTERNATIONAL AIRPORT

ORLANDO'S AVIATION AUTHORITY HAS COMPLETED AN IMPROVEMENT PLAN FOR ITS AIRPORT FOR \$1.1 BILLION.

Orlando's Aviation Authority has approved a \$1.1 Billion improvement plan that will up its flying capacity to 45 million flyers annually.

The new terminal will improve the infrastructure of the region's transportation paving the way for higher growth in the city of Orlando and its surroundings.



THE BRIGHTLINE

The Brightline is a \$2.5 Billion project that will connect Miami, Fort Lauderdale and Palm Beach to Orlando with Trains traveling at 125 miles per hour. The Miami-Fort Lauderdale-Palm Beach connection is currently under construction and the Orlando connection is expected to start in 2018. The Brightline will take 3 hours to travel from Downtown Miami to Downtown Orlando.

LAKE NONA MEDICAL CITY

FACILITIES OF BIO INVESTIGATION AND EDUCATION

This 650 acre center of health and sciences is a City landmark. Lake Nona Medical City is a prime example of the cluster formed by accelerated innovation in health and biological science centers.

It is estimated that the medical city will create up to 30,000 jobs and have a \$7.6 billion impact on the economy over the next decade.



UNIVERSITY OF CENTRAL FLORIDA

The University of Central Florida is the largest university campus in the United States in terms of enrollment with 54,513 students and has a campus size of 1,415 acres

THE FLORIDA MALL

CENTRAL FLORIDA'S MOST DYNAMIC SHOPPING DESTINATION.

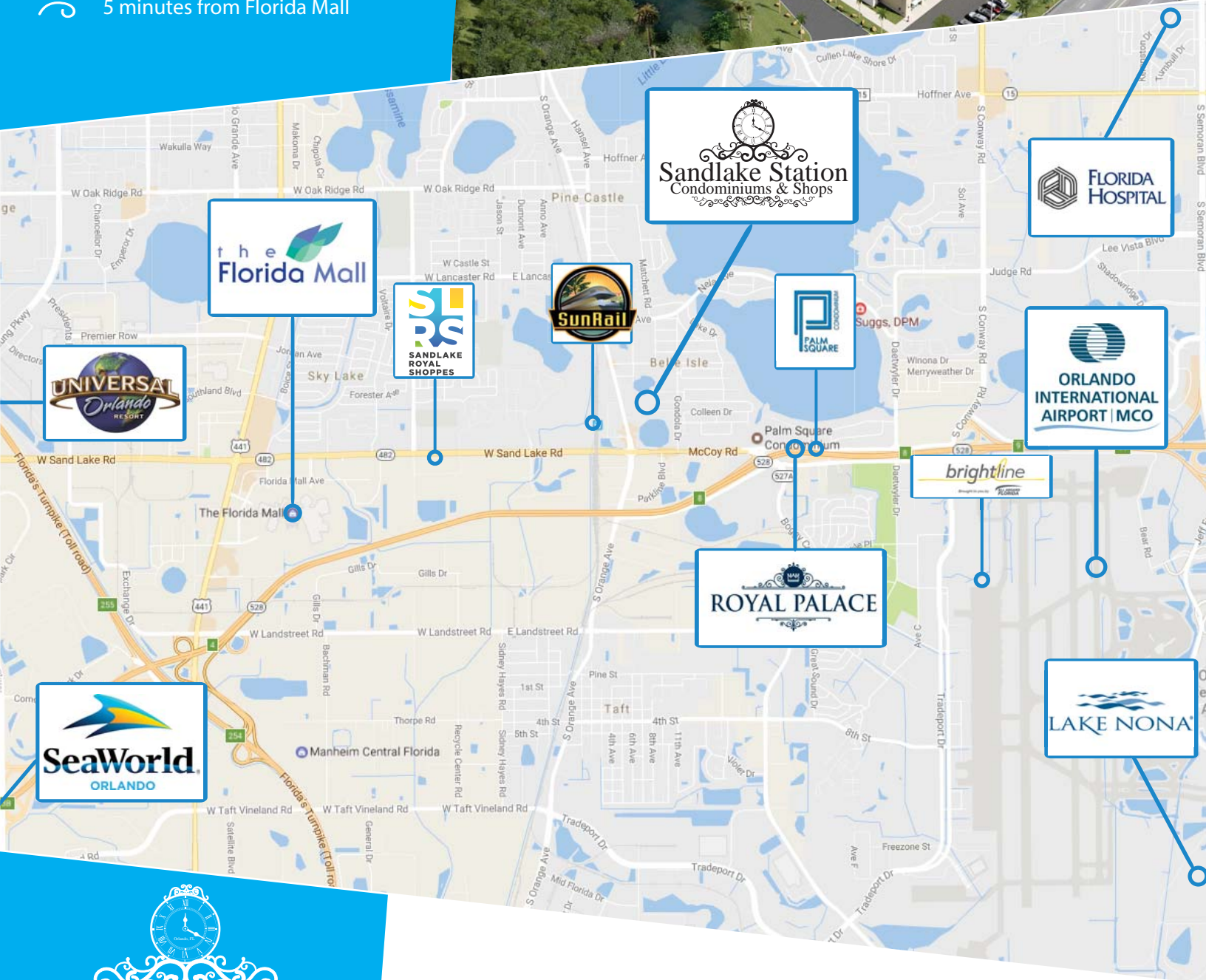
Located minutes from Orlando International Airport, The Florida Mall is the largest and most diverse shopping destination in central Florida. It attracts 20 million visitors per year and offers more than 250 stores, entertainment and dining options.



IDEAL LOCATION.

Prime location, minutes from all activities.

- Steps from SUNRAIL Sandlake Station
- 7 minutes from Orlando International Airport
- 7 minutes from Downtown Orlando
- 5 minutes from Florida Mall



Sandlake Station Condominiums & Shops



Sandlake Station Condominiums & Shops 7803 S Orange Ave. Orlando, FL 32089